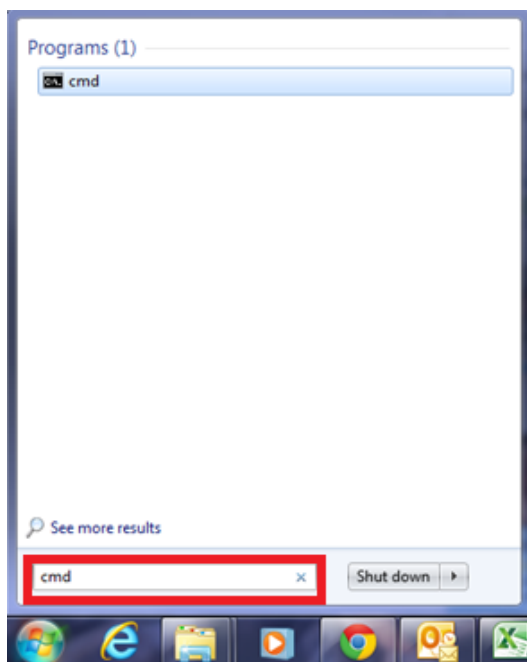
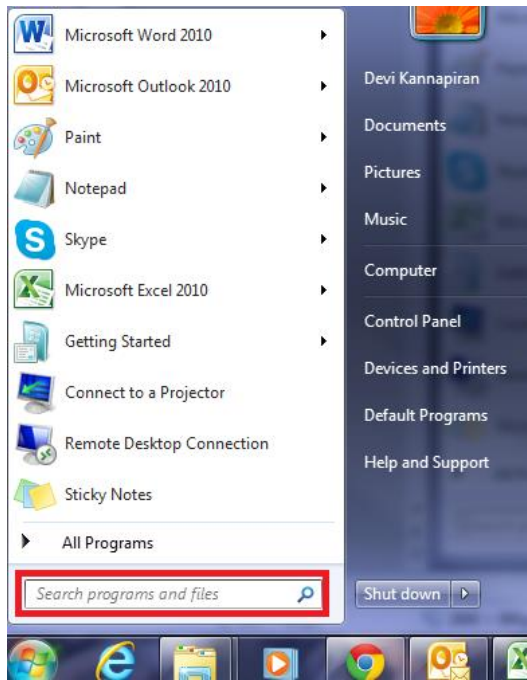


How to Perform Ping

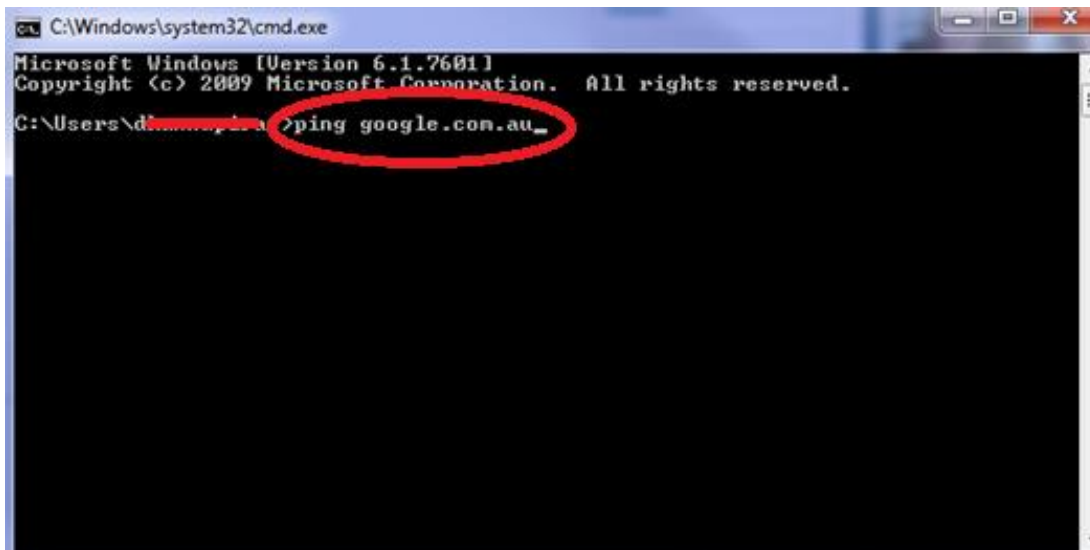
⇒ Click the **start** button, and Type “**cmd**” in the text box and then hit the **Enter** key on your keyboard.



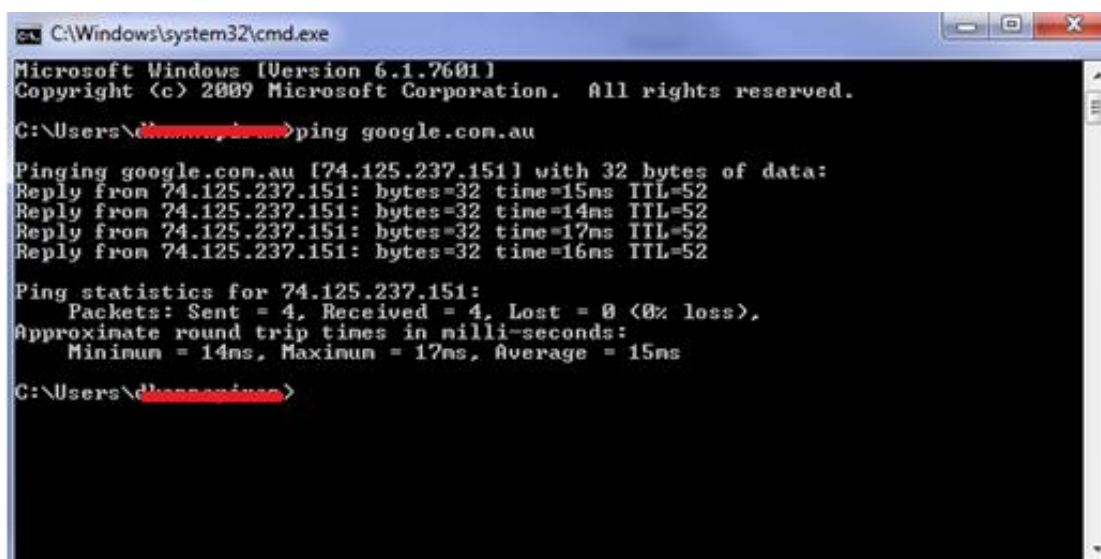
⇒ A black box with a flashing cursor will open; this is the Command Prompt.

Type **ping hostname** or **ping IP address** and press **Enter**

- A **hostname** is typically a website address. Replace *hostname* with the website that or server that you want to ping. For example, to ping google.com, type ping www.google.com
- An **IP address** is a computer's location on a network, either locally or on the internet. If you know the IP address that you want to ping, replace *IP address* with it. For example, to ping the IP address 192.168.1.1, type ping 192.168.1.1.
- To have your PC ping itself, type ping 127.0.0.1.



```
C:\Windows\system32\cmd.exe
Microsoft Windows [Version 6.1.7601]
Copyright (c) 2009 Microsoft Corporation. All rights reserved.
C:\Users\d\>ping google.com.au
```



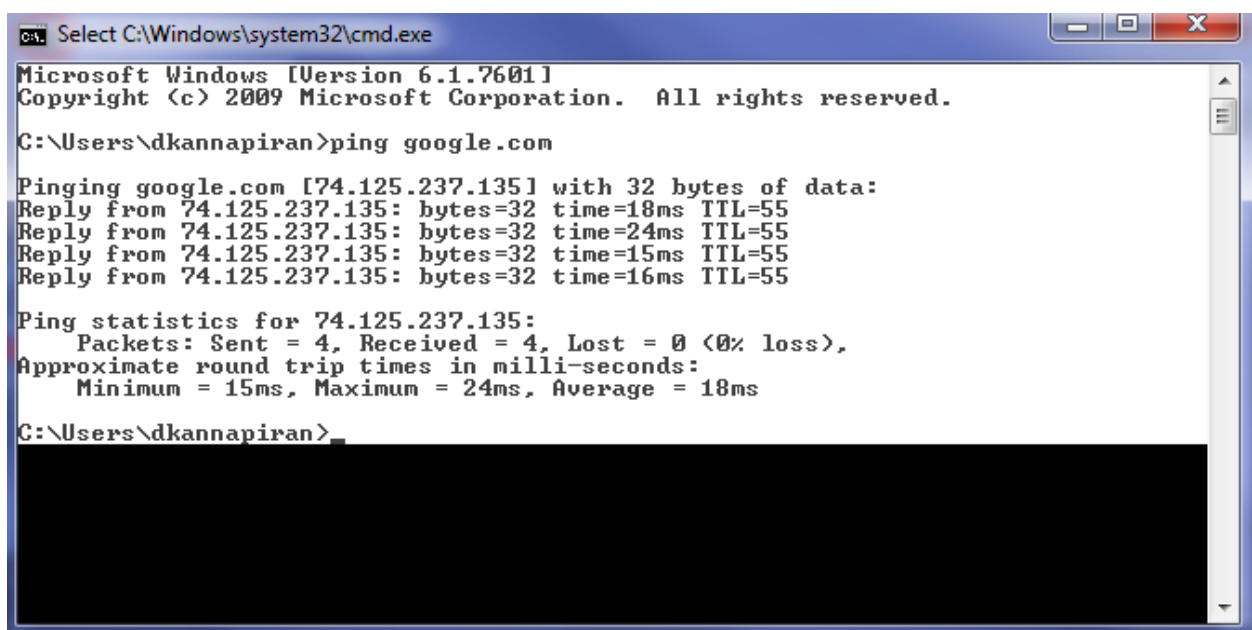
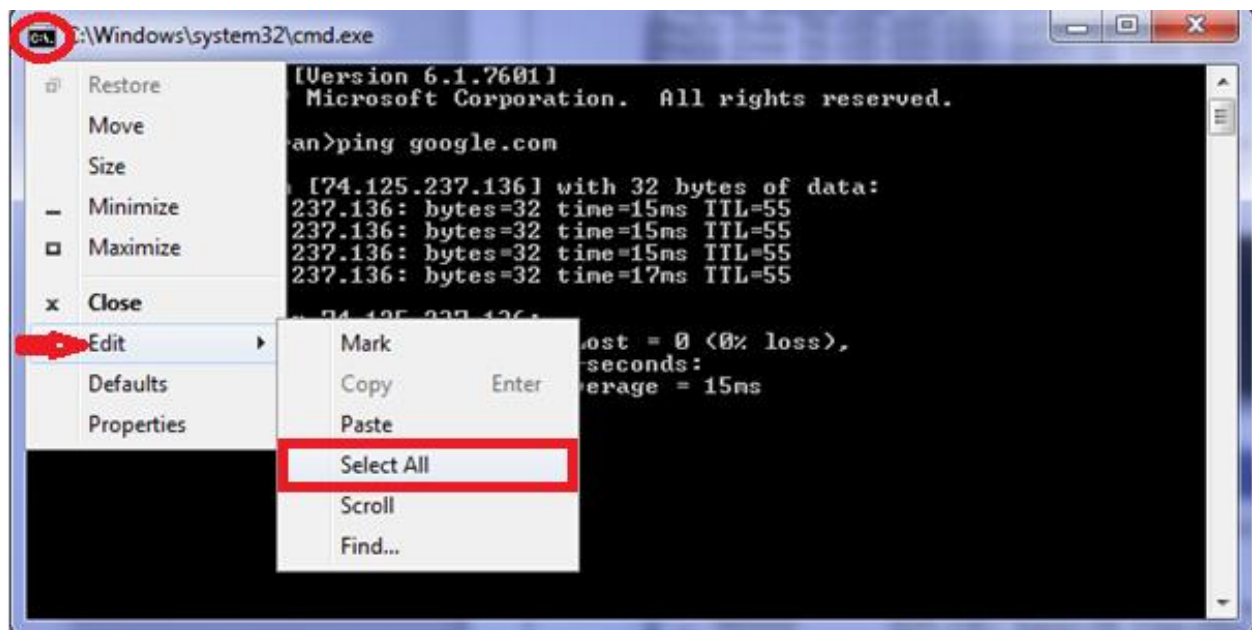
```
C:\Windows\system32\cmd.exe
Microsoft Windows [Version 6.1.7601]
Copyright (c) 2009 Microsoft Corporation. All rights reserved.
C:\Users\d\>ping google.com.au

Pinging google.com.au [74.125.237.151] with 32 bytes of data:
Reply from 74.125.237.151: bytes=32 time=15ms TTL=52
Reply from 74.125.237.151: bytes=32 time=14ms TTL=52
Reply from 74.125.237.151: bytes=32 time=17ms TTL=52
Reply from 74.125.237.151: bytes=32 time=16ms TTL=52

Ping statistics for 74.125.237.151:
    Packets: Sent = 4, Received = 4, Lost = 0 (0% loss),
    Approximate round trip times in milli-seconds:
        Minimum = 14ms, Maximum = 17ms, Average = 15ms
C:\Users\d\>
```

To copy them to Notepad:

⇒ Click on the **black icon** on the top, go to **edit** and **select all**.



- ⇒ Again, click on the same **black icon**, go to **edit** and **copy**.
Now, you can paste them on Notepad.

