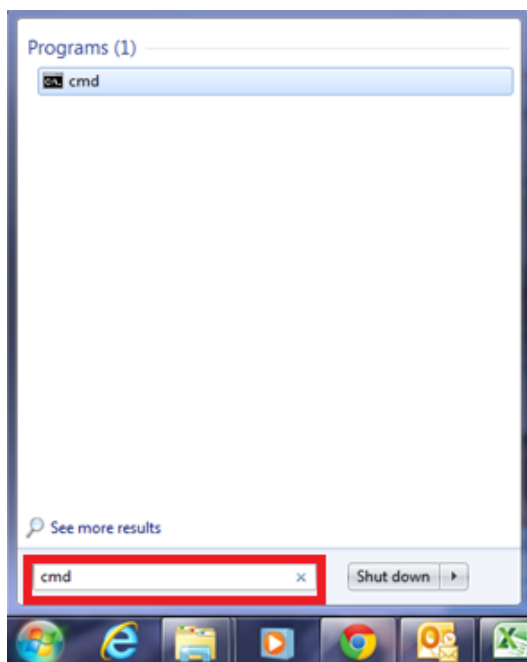
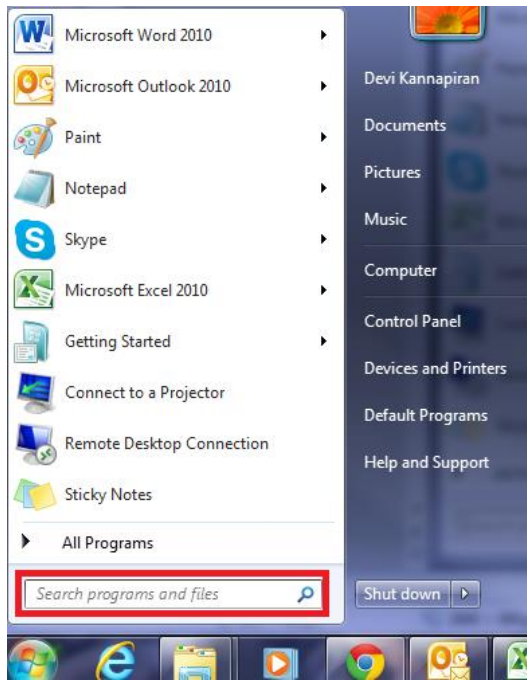
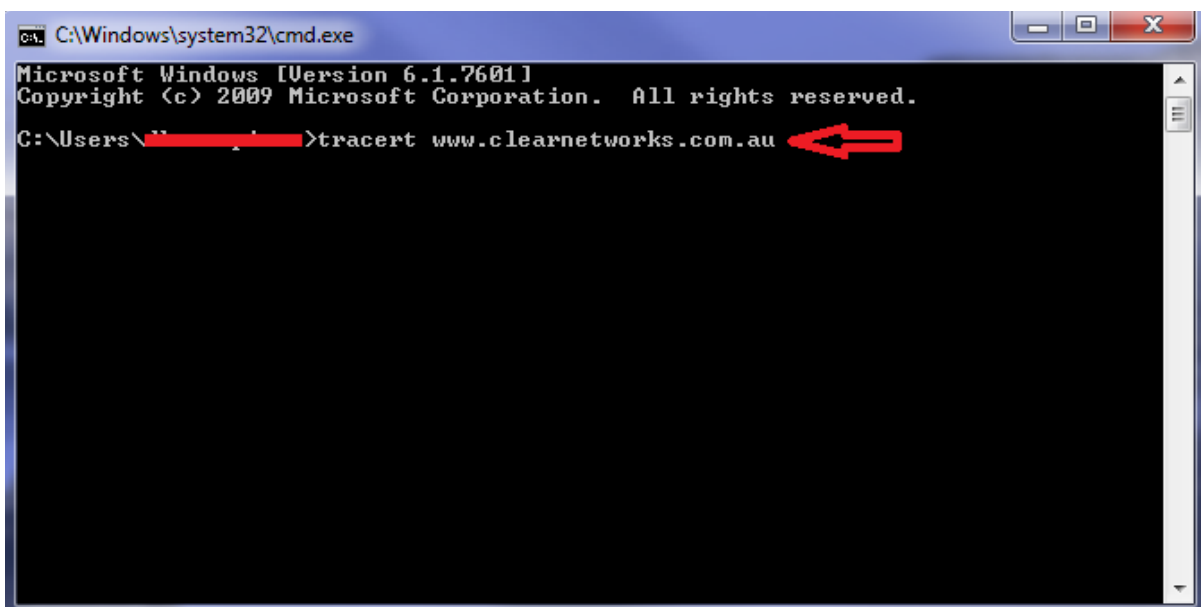


## How to Perform Trace Route

⇒ Click the **start** button, and Type “**cmd**” in the text box and then hit the **Enter** key on your keyboard.

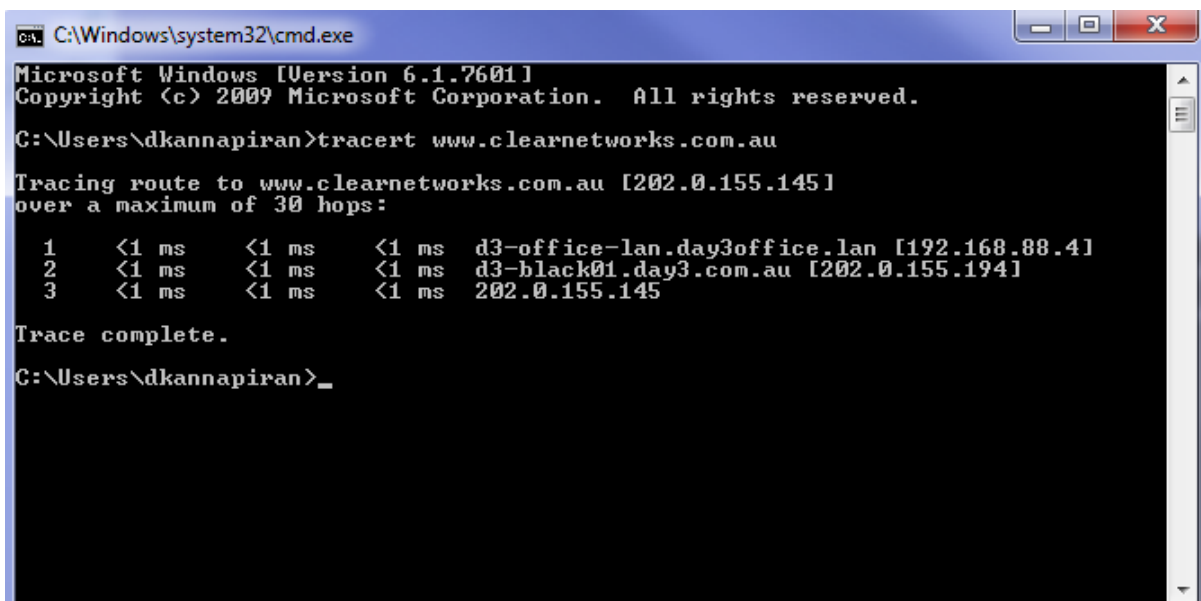


- ⇒ A black box with a flashing cursor will open; this is the Command Prompt.  
Type **ping hostname** or **ping IP address** and press **Enter**
- A **hostname** is typically a website address. Replace *hostname* with the website that or server that you want to ping. For example, to Trace Route [www.clearnetworks.com.au](http://www.clearnetworks.com.au), type `tracert www.clearnetworks.com.au`



```
C:\Windows\system32\cmd.exe
Microsoft Windows [Version 6.1.7601]
Copyright (c) 2009 Microsoft Corporation. All rights reserved.
C:\Users\>tracert www.clearnetworks.com.au
```

- ⇒ The following is a successful traceroute

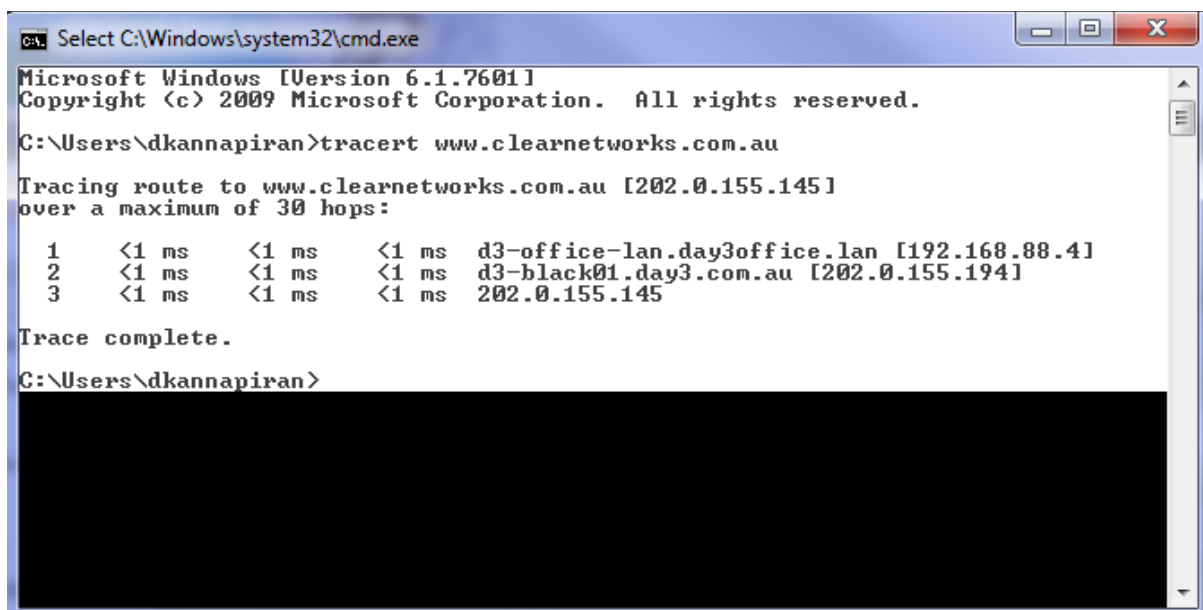
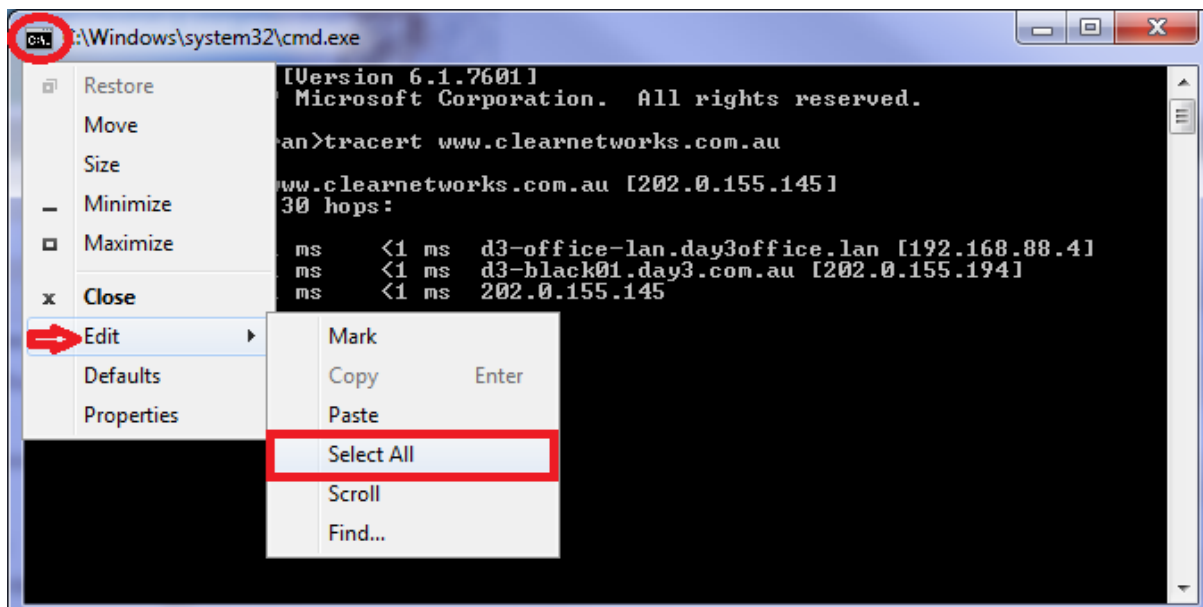


```
C:\Windows\system32\cmd.exe
Microsoft Windows [Version 6.1.7601]
Copyright (c) 2009 Microsoft Corporation. All rights reserved.
C:\Users\dkannapiran>tracert www.clearnetworks.com.au

Tracing route to www.clearnetworks.com.au [202.0.155.145]
over a maximum of 30 hops:
  0  <1 ms    <1 ms    <1 ms    d3-office-lan.day3office.lan [192.168.88.4]
  1  <1 ms    <1 ms    <1 ms    d3-black01.day3.com.au [202.0.155.194]
  2  <1 ms    <1 ms    <1 ms    202.0.155.145
Trace complete.
C:\Users\dkannapiran>
```

### To copy them to Notepad:

⇒ Click on the **black icon** on the top, go to **edit** and **select all**.



- ⇒ Again, click on the same **black icon**, go to **edit** and **copy**.  
Now, you can paste them on Notepad.

