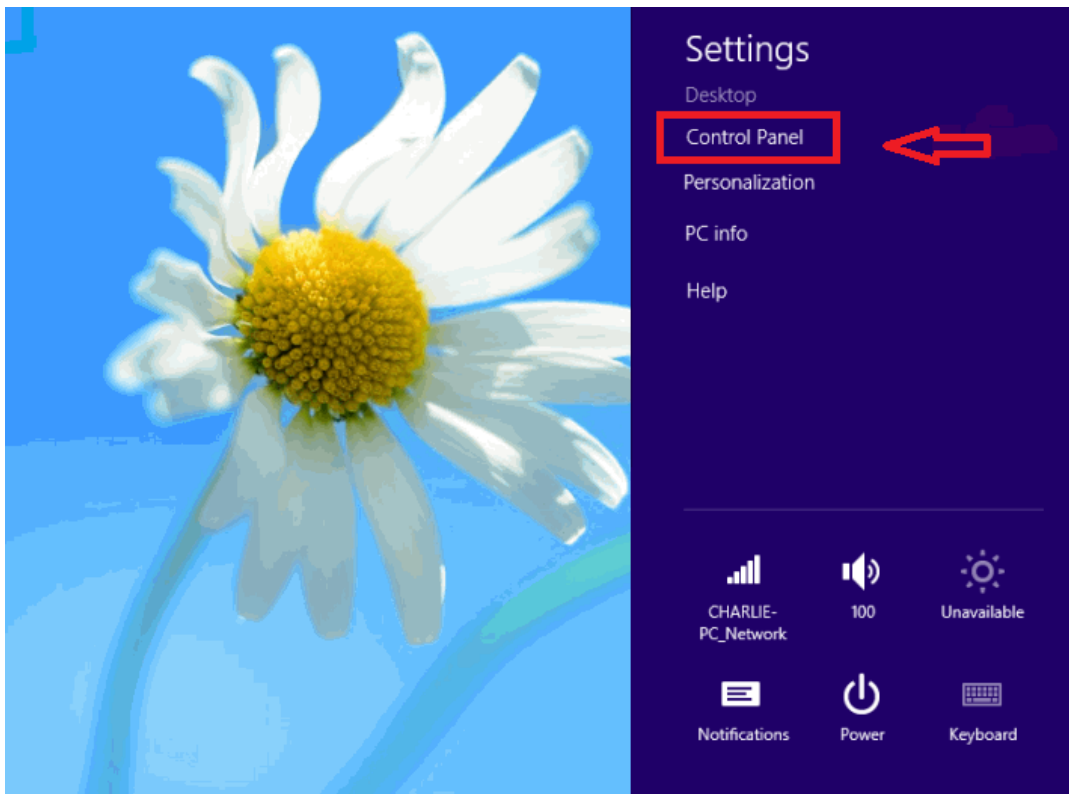
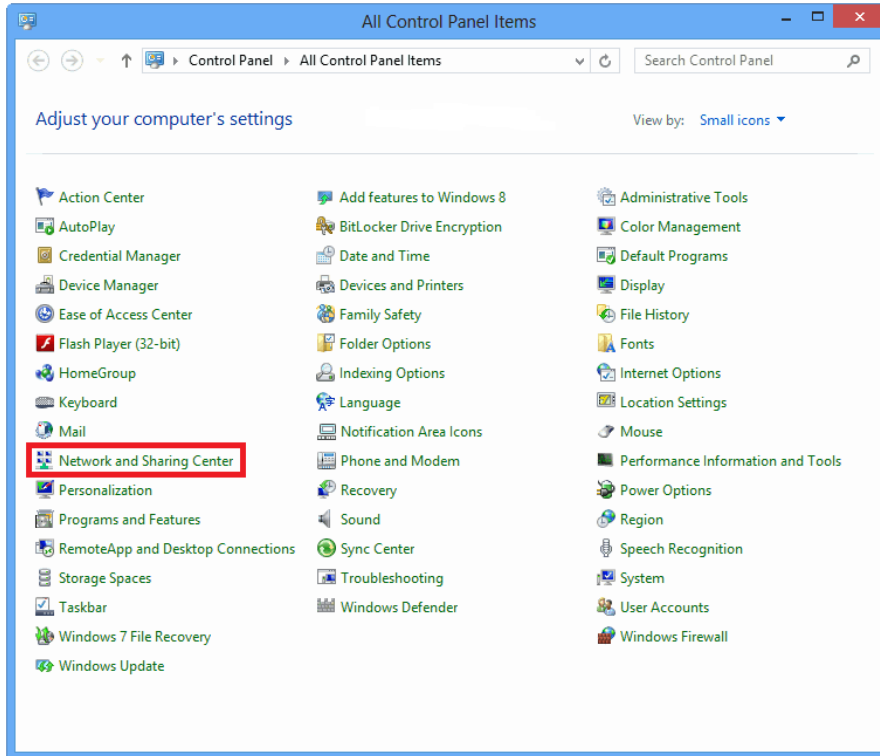


How to Connect to Internet Using Dial-Up Connection

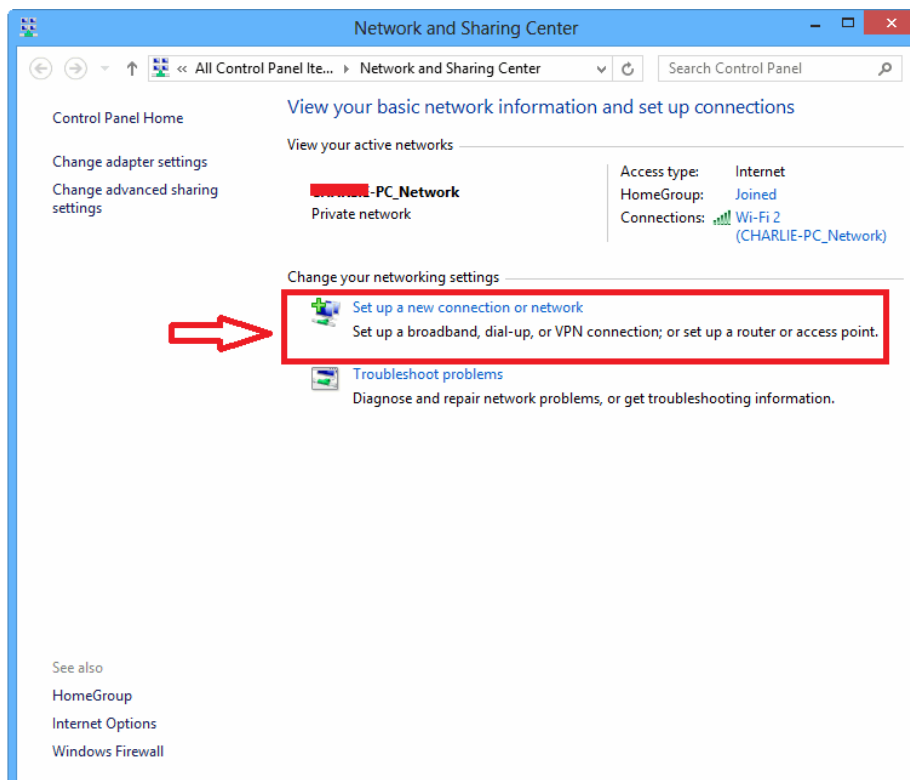
⇒ Go to the Settings tab on your Desktop, and click on control panel.



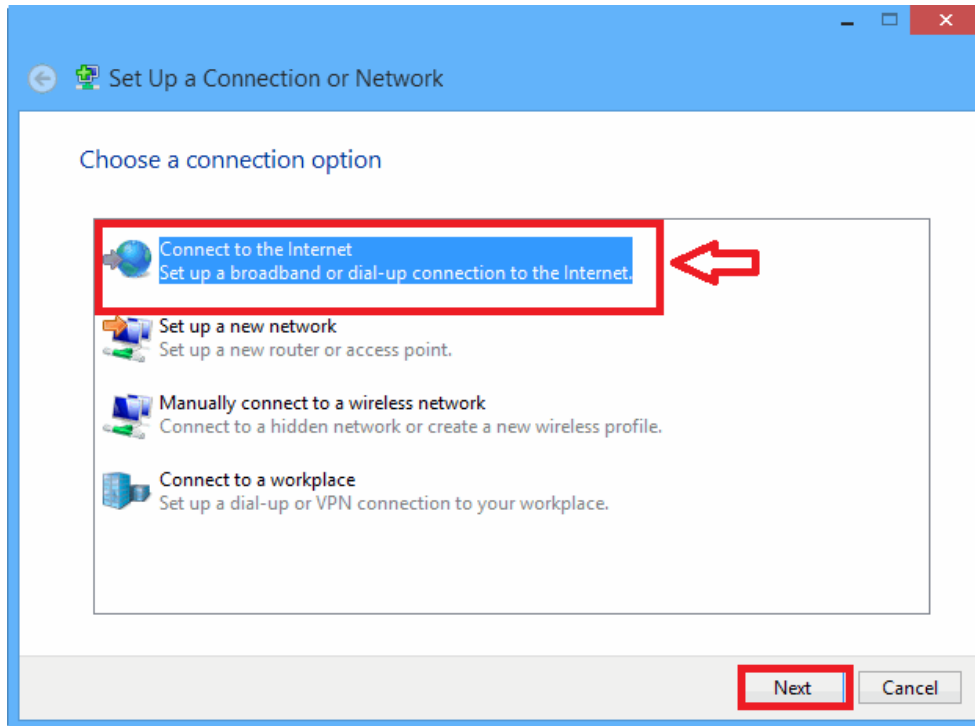
⇒ click **Network and Sharing Center**,



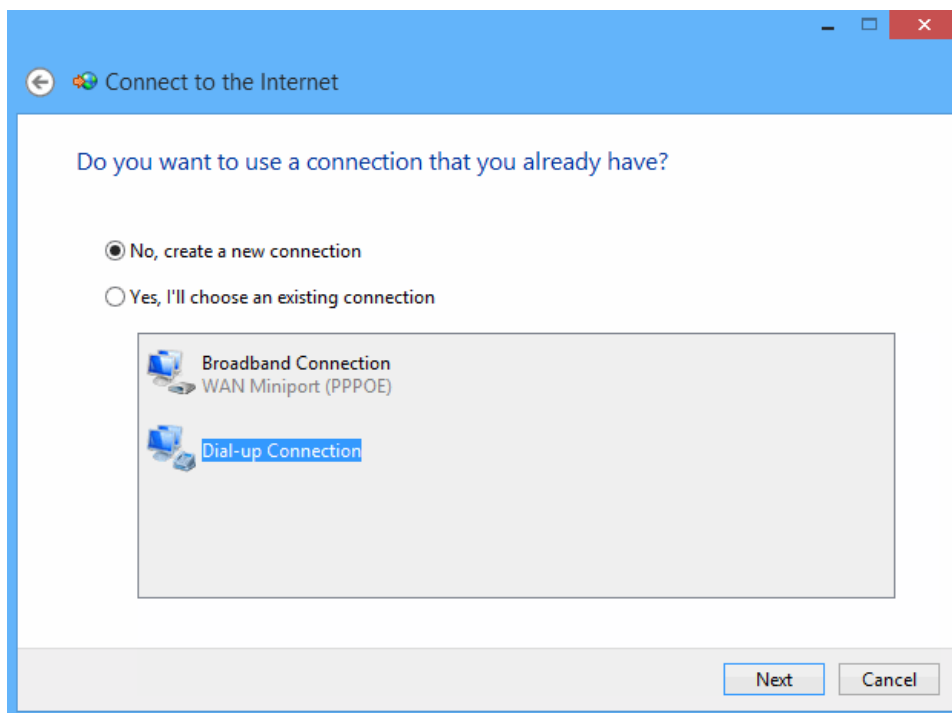
⇒ click **Set up a connection or network**,



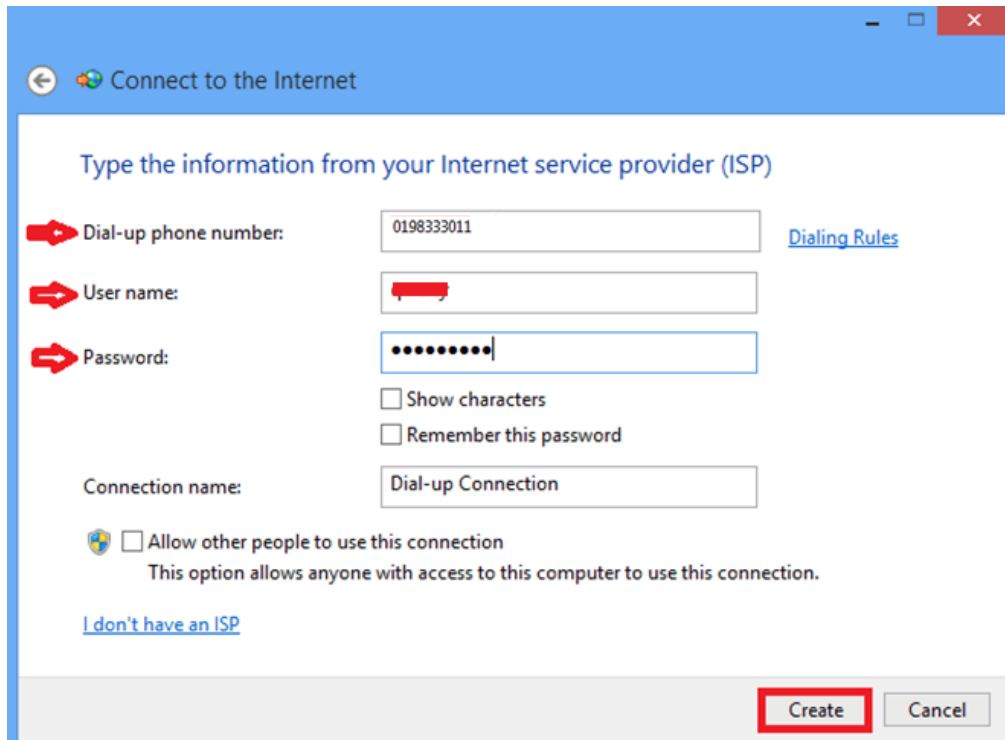
⇒ Then, click **Connect to the Internet**.



⇒ Now select **Dial-up Connection (PPPoE)**.

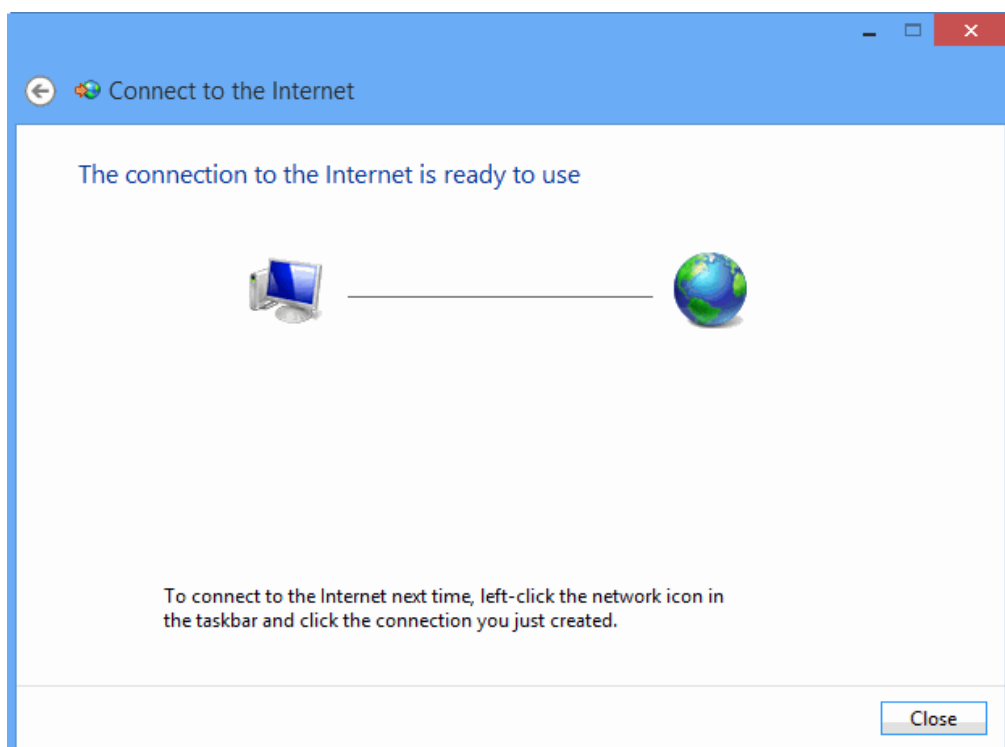


⇒ Fill in the **Dial-up Phone No**, **username**, **password** and click on **Create** to setup your PPPOE connection.

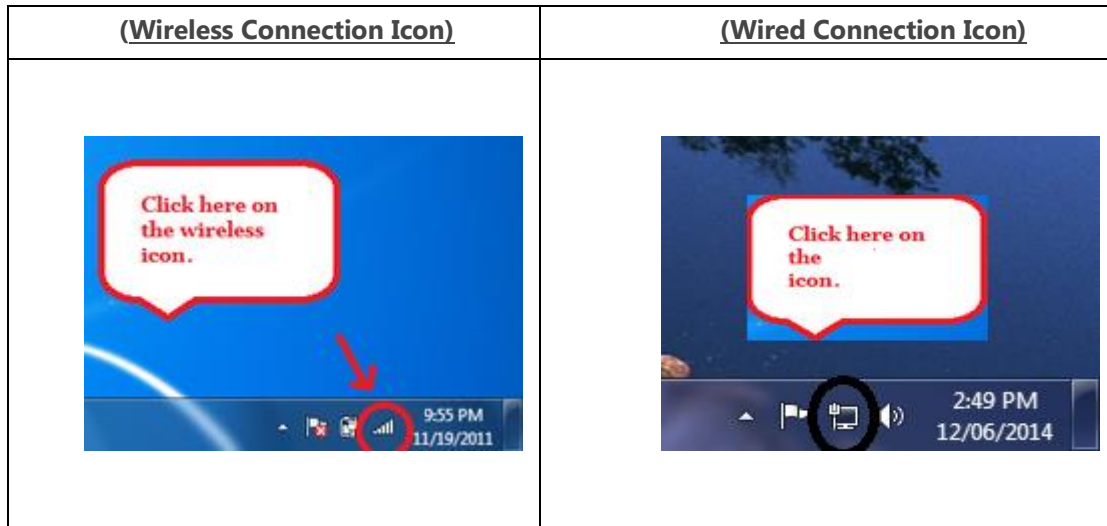


The screenshot shows a Windows window titled "Connect to the Internet". The main heading is "Type the information from your Internet service provider (ISP)". There are three input fields with red arrows pointing to them: "Dial-up phone number" (containing "0198333011"), "User name" (containing a redacted name), and "Password" (containing masked characters). To the right of the phone number field is a link for "Dialing Rules". Below the password field are two checkboxes: "Show characters" and "Remember this password", both of which are unchecked. There is a "Connection name" field containing "Dial-up Connection". At the bottom left, there is a checkbox "Allow other people to use this connection" which is unchecked, with a sub-note: "This option allows anyone with access to this computer to use this connection." Below this is a link "I don't have an ISP". At the bottom right, there are two buttons: "Create" (highlighted with a red box) and "Cancel".

⇒ Once the testing is complete, windows will be connected to the internet



⇒ Once the network is setup, you can connect directly to the internet by either clicking on the **wireless** or **wired connection** icon on the bottom of the desktop screen



⇒ Click on **Clear Central**

